



ARCTIC COMPETITIONS



3 editions of Arctic Competitions
277 competing teams
6 expeditions to polar stations in Iceland, Northern Norway, Faroe Islands and Svalbard



ONLINE LESSONS



500+ lessons

Various topics:
glaciology, geology, microbiology,

ecology, climate change, toxicology, indigenous people, Arctic exploration technology, life and work at polar stations



EDUCATOR TRAINING SESSIONS

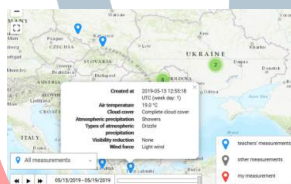


3 Educators' Fora
(Warsaw, Paris, Oslo)

~ 70 project ambassadors from all over Europe



MONITORING SYSTEM

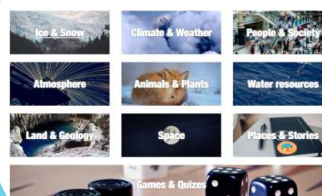


various meteorological and phenological parameters
results: database & maps (2200+ reports)

illustrated manual dedicated to observations
mobile app - awards for regular submissions, photos



POLARPEDIA



~ 500 polar and STEM-related terms, games and quizzes

16 language versions

PARTNERS



This project (EDU-ARCTIC) has received funding from the European Union's Horizon 2020 research and innovation programme under grant agreement No. 710240.

BONUS ACTIVITIES

Inspired by participants' feedback and ideas



ONLINE
LESSONS



Thematic courses
a comprehensive series
of complementary
topics. Each course has
a set day of week and
hour, available to
include into school
practice and curriculum



MONITORING
SYSTEM



EDU-ARCTIC
MONITORING
SYSTEM
MOBILE APP



Mobile version,
available for all citizens
from any location

Gamification
Photos can be added



ARCTIC
COMPETITIONS



EDU-ARCTIC
EXPEDITIONS
ICELAND / FAROE ISLANDS



Additional 3rd edition
Promoting team work by
inviting teams
consisting of up to 2
students and a teacher

THE ARCTIC
EXPLORER: Mobile
Quiz inspired by finalist'
from 2018 edition



POLARPIDIA



10 additional national language
versions thanks to teachers'
contribution

Sustainable educational resources
in form of games and quizzes:
hands-on activities, online tools,
boardgames, experiment
scenarios and quests

COMMUNICATION MEANS

Followers on social media:



>1730



>390



>350



>300 videos



21 759
Newsletters sent

www.edu-arctic.eu